

WE ARE Central Coast **PRIMARYCARE**

...and we're here to help you.

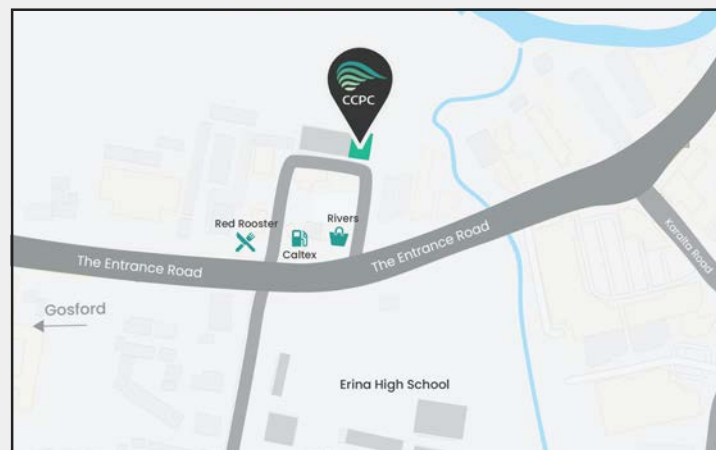
Central Coast Primary Care, also referred to as CCPC, is a local not-for-profit organisation that delivers healthcare programs and community services to the people of the Central Coast.

CCPC is a registered provider for the NDIS and accredited against the NDIS Quality and Safeguard Standards.

We've helped many people on the Central Coast and have fast become recognised as one of the leading providers of NDIS services in the local area.



HOW TO FIND US



Our office is located at 167B The Entrance Road, Erina, behind the Rivers precinct.



02 4365 2294



www.ccpc.com.au



[centralcoastprimarycare](https://www.facebook.com/centralcoastprimarycare)



ccpc@ccpc.com.au



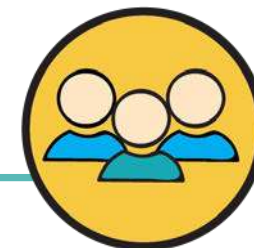
CCPC acknowledges
Traditional Land Owners



All welcome here



Central Coast
PRIMARYCARE



NDIS SOCIAL ACTIVITIES

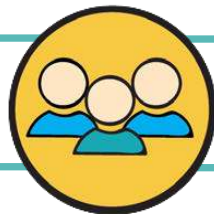


NDIS Quality
and Safeguards
Commission



Registered
NDIS
Provider

SOCIAL ACTIVITIES



Feeling like you're part of a community and having a sense of belonging is extremely important. As part of your NDIS plan, we encourage you to enjoy a range of social activities.

Some of our activities include:



Movies



Bowling



Fishing



Fitness and Dance classes



Arts and Crafts



Music and performing arts

We also regularly plan special events, such as overnight trips away, day trips and holiday celebrations.

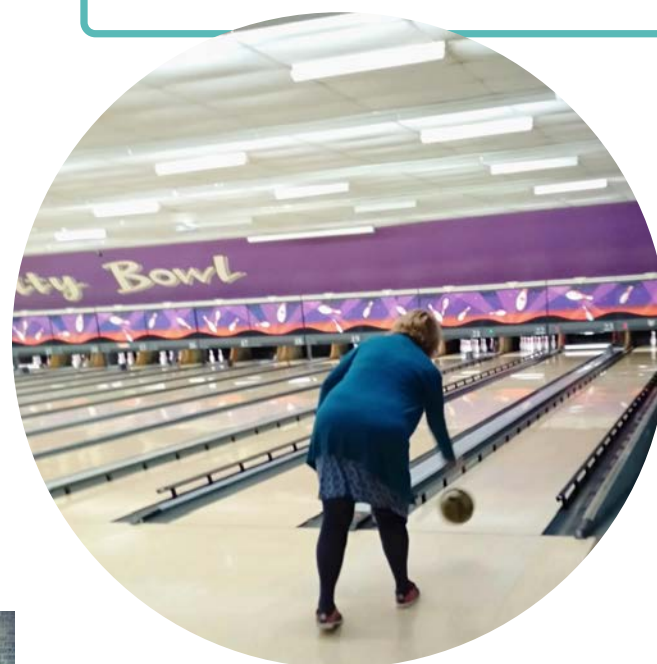
WHY CHOOSE CCPC FOR YOUR SOCIAL ACTIVITIES?

- ✓ We offer one-on-one support for all of our clients and can help you work out which activities might be suitable for you.
- ✓ You're spoilt for choice when it comes to deciding on social activities - we have a jammed-packed calendar full of things to do that are suitable for a range of age groups and abilities.
- ✓ Whether you want to learn an instrument, go to the gym, learn a language or attend an event, we can make it happen.



"I love the CCPC bowling group. It's a real fun atmosphere and I have made friends that I now spend time with outside of bowling."

Juliet, CCPC Participant



*Ready to try
something new?*

Call our team today on 02 4365 2294